

Facility Above WLA

- ◆ Above WLA: >5 kg/d
- Above WLA: 1-5 kg/d
- ▲ Above WLA: 0-1 kg/d

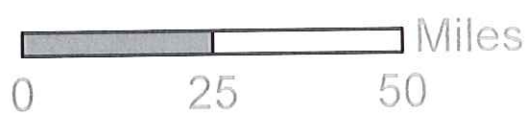
Facility Below WLA

- ▲ Below WLA: 0-1 kg/d
- Below WLA: 1-2 kg/d
- ◆ Below WLA: >2 kg/d

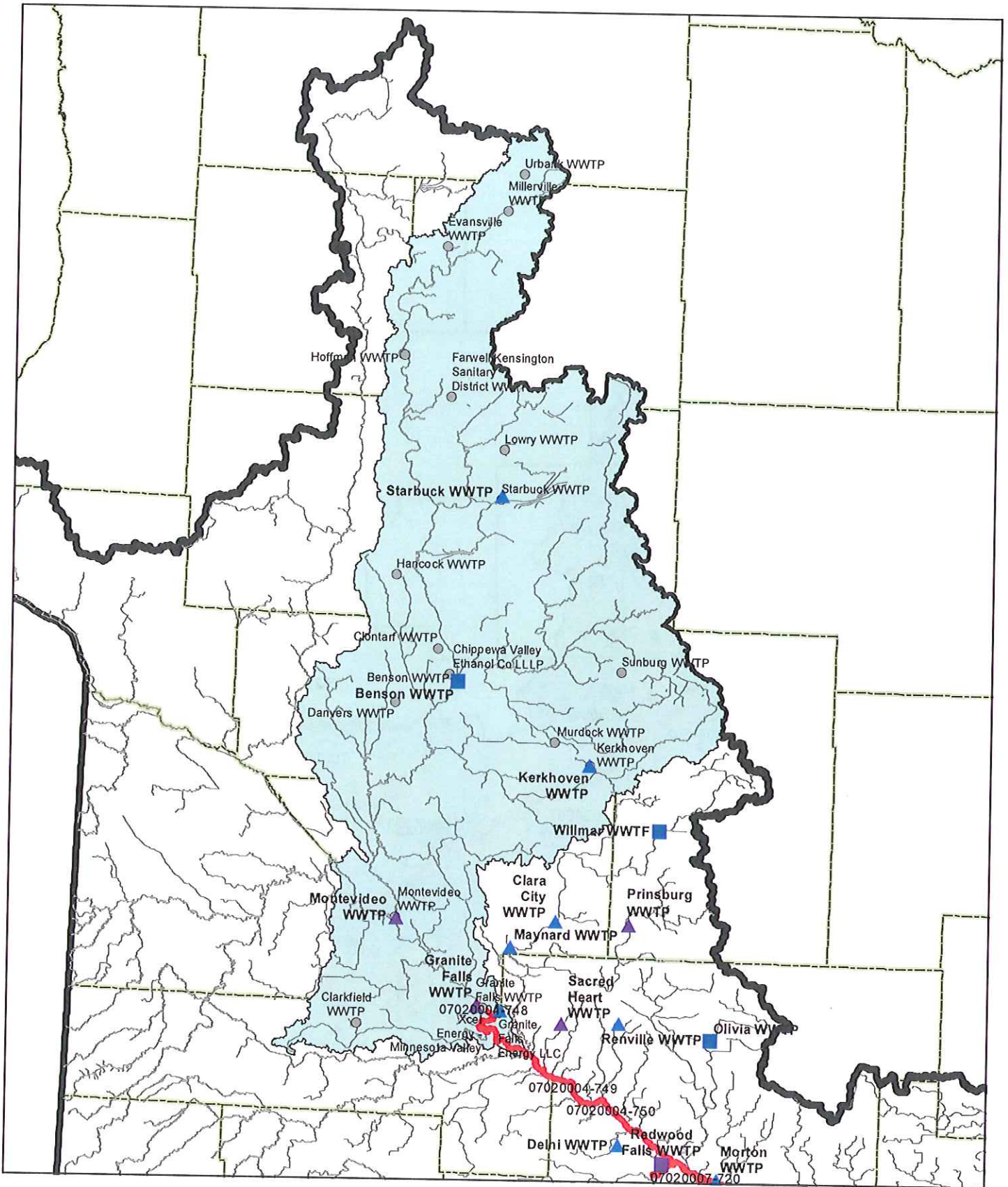
— RES Impairment

~ Assessed stream

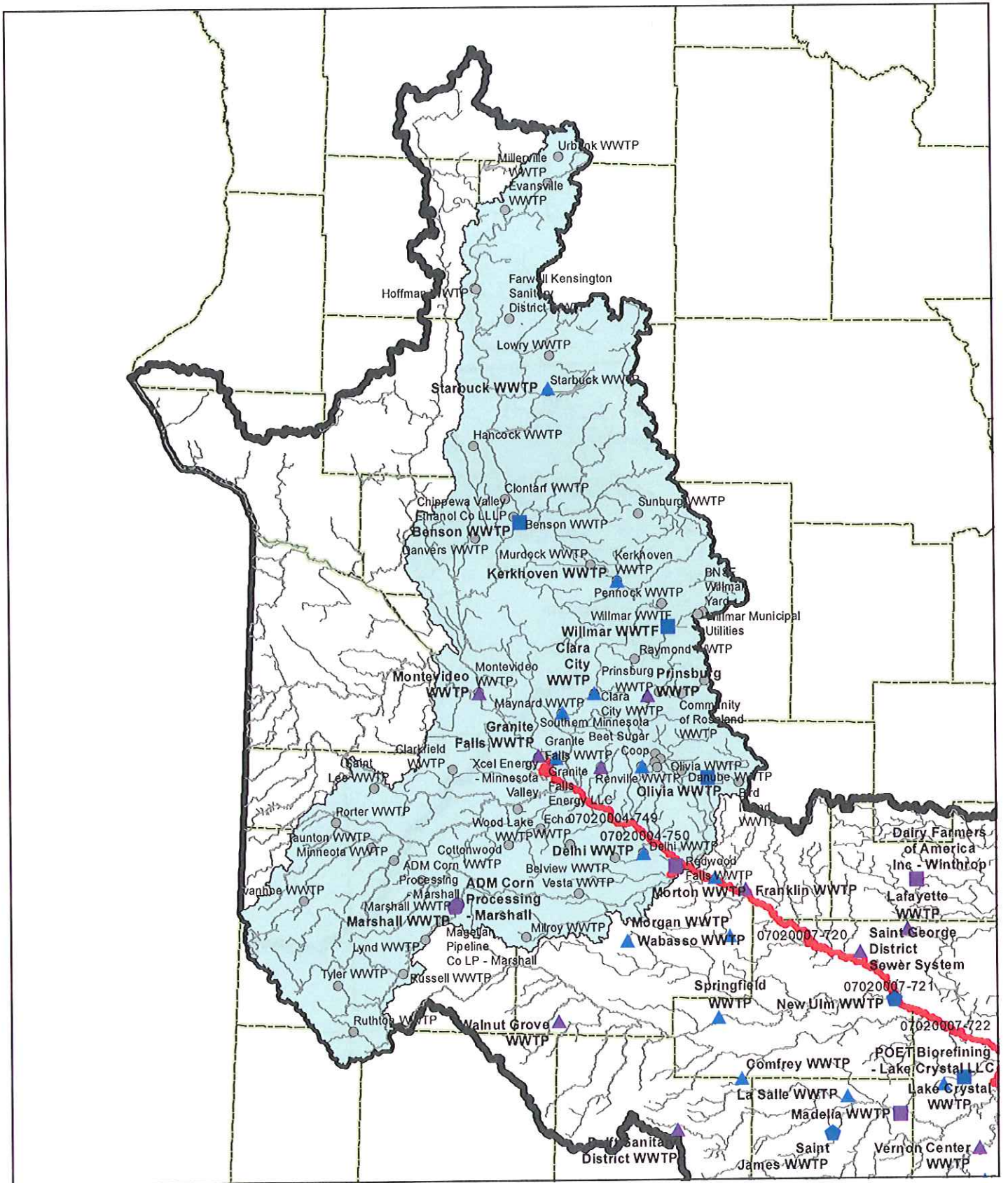
● MN Basin NPDES Facilities



Drainage areas of River Eutrophication Standard (RES) impairments in the Minnesota River Basin



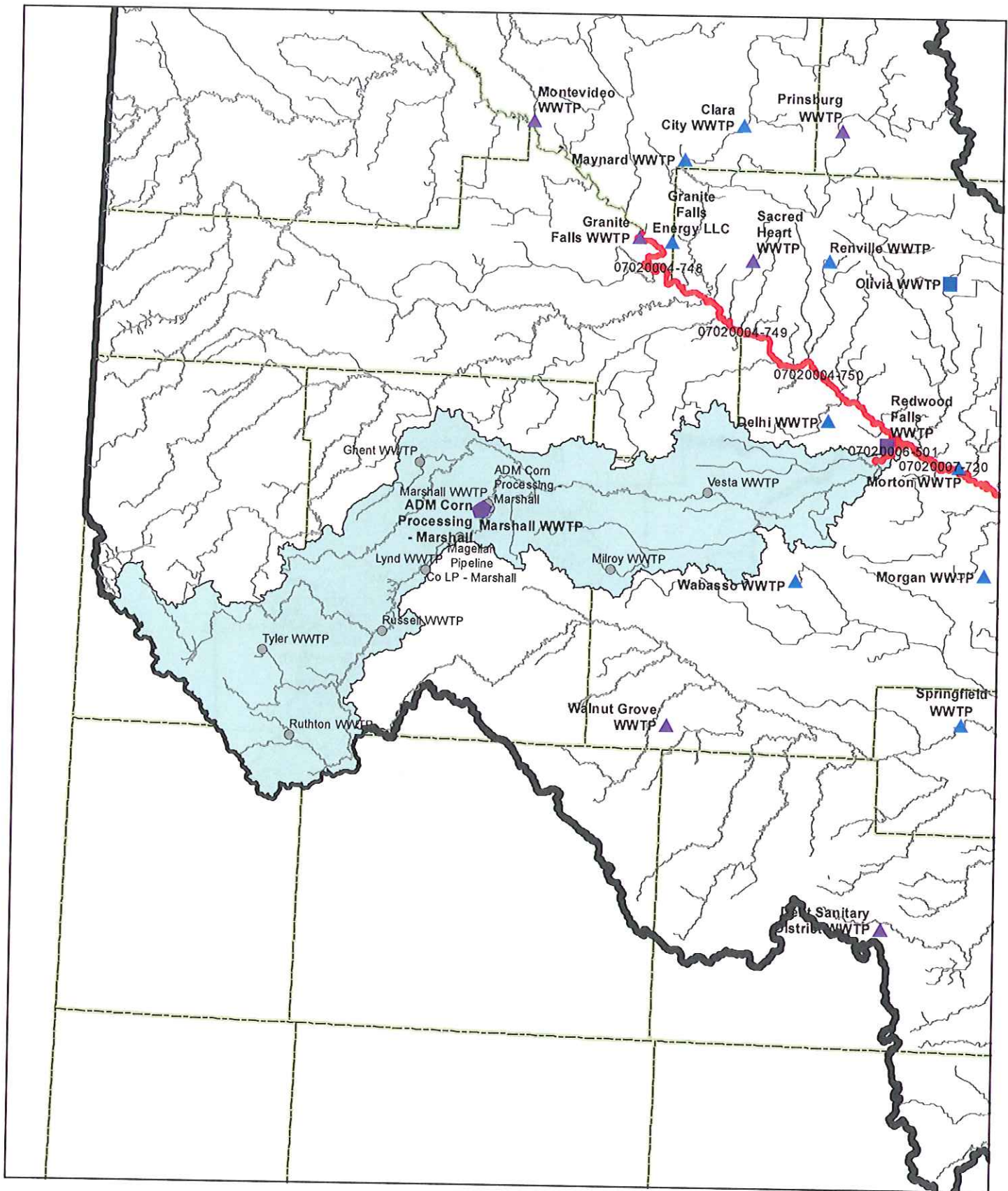
- | | | | |
|-----------------------------|-----------------------------|-----------------|-----------------------|
| Facilities Above WLA | Facilities Below WLA | RES Impairment | Area upstream of AUID |
| Above WLA: 0-1 kg/d | Below WLA: 0-1 kg/d | Assessed stream | |
| Above WLA: 1-5 kg/d | Below WLA: 1-2 kg/d | | |
| Above WLA: >5 kg/d | Below WLA: >2 kg/d | | |
| | NPDES discharge station | | |



- Facilities Above WLA**
- ▲ Above WLA: 0-1 kg/d
 - Above WLA: 1-5 kg/d
 - ◆ Above WLA: >5 kg/d
- Facilities Below WLA**
- ▲ Below WLA: 0-1 kg/d
 - Below WLA: 1-2 kg/d
 - ◆ Below WLA: >2 kg/d
 - NPDES discharge station

- RES Impairment
- Assessed stream
- Area upstream of AUID

Drainage area for AUID T07020004_750



Facilities Above WLA

- ▲ Above WLA: 0-1 kg/d
- Above WLA: 1-5 kg/d
- ◆ Above WLA: >5 kg/d

Facilities Below WLA

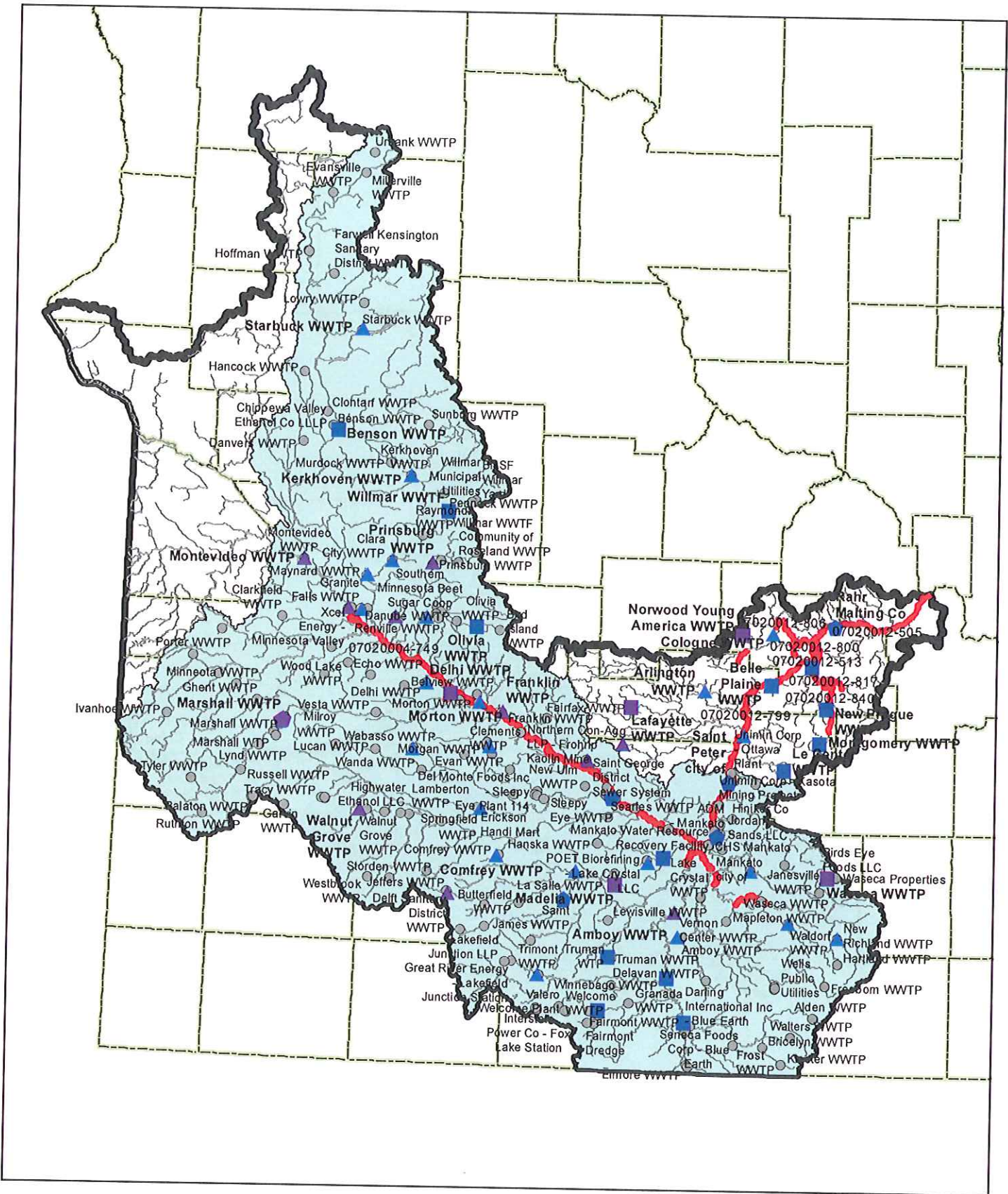
- ▲ Below WLA: 0-1 kg/d
- Below WLA: 1-2 kg/d
- ◆ Below WLA: >2 kg/d
- NPDES discharge station

- RES Impairment
- Assessed stream

Area upstream of AUID



- | | | | |
|-----------------------------|-----------------------------|-----------------|-----------------------|
| Facilities Above WLA | Facilities Below WLA | RES Impairment | Area upstream of AUID |
| Above WLA: 0-1 kg/d | Below WLA: 0-1 kg/d | Assessed stream | |
| Above WLA: 1-5 kg/d | Below WLA: 1-2 kg/d | | |
| Above WLA: >5 kg/d | Below WLA: >2 kg/d | | |
| | NPDES discharge station | | |



Facilities Above WLA

- ▲ Above WLA: 0-1 kg/d
- Above WLA: 1-5 kg/d
- ◆ Above WLA: >5 kg/d

Facilities Below WLA

- ▲ Below WLA: 0-1 kg/d
- Below WLA: 1-2 kg/d
- ◆ Below WLA: >2 kg/d
- NPDES discharge station

- RES Impairment
- Area upstream of AUID
- Assessed stream



Facilities Above WLA

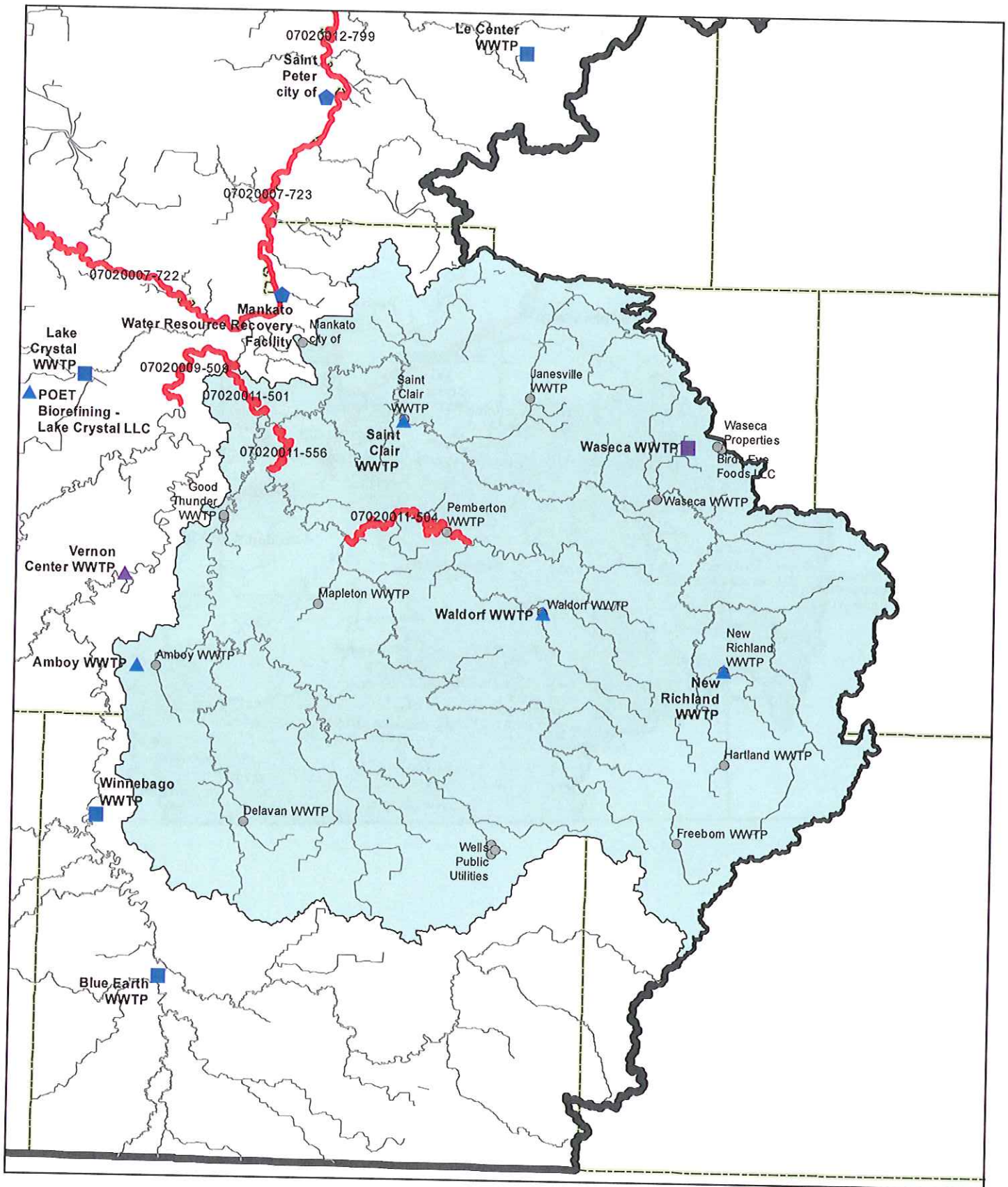
- ▲ Above WLA: 0-1 kg/d
- Above WLA: 1-5 kg/d
- ◆ Above WLA: >5 kg/d

Facilities Below WLA

- ▲ Below WLA: 0-1 kg/d
- Below WLA: 1-2 kg/d
- ◆ Below WLA: >2 kg/d
- NPDES discharge station

- RES Impairment
- Assessed stream

Area upstream of AUID



Facilities Above WLA

- ▲ Above WLA: 0-1 kg/d
- Above WLA: 1-5 kg/d
- ◆ Above WLA: >5 kg/d

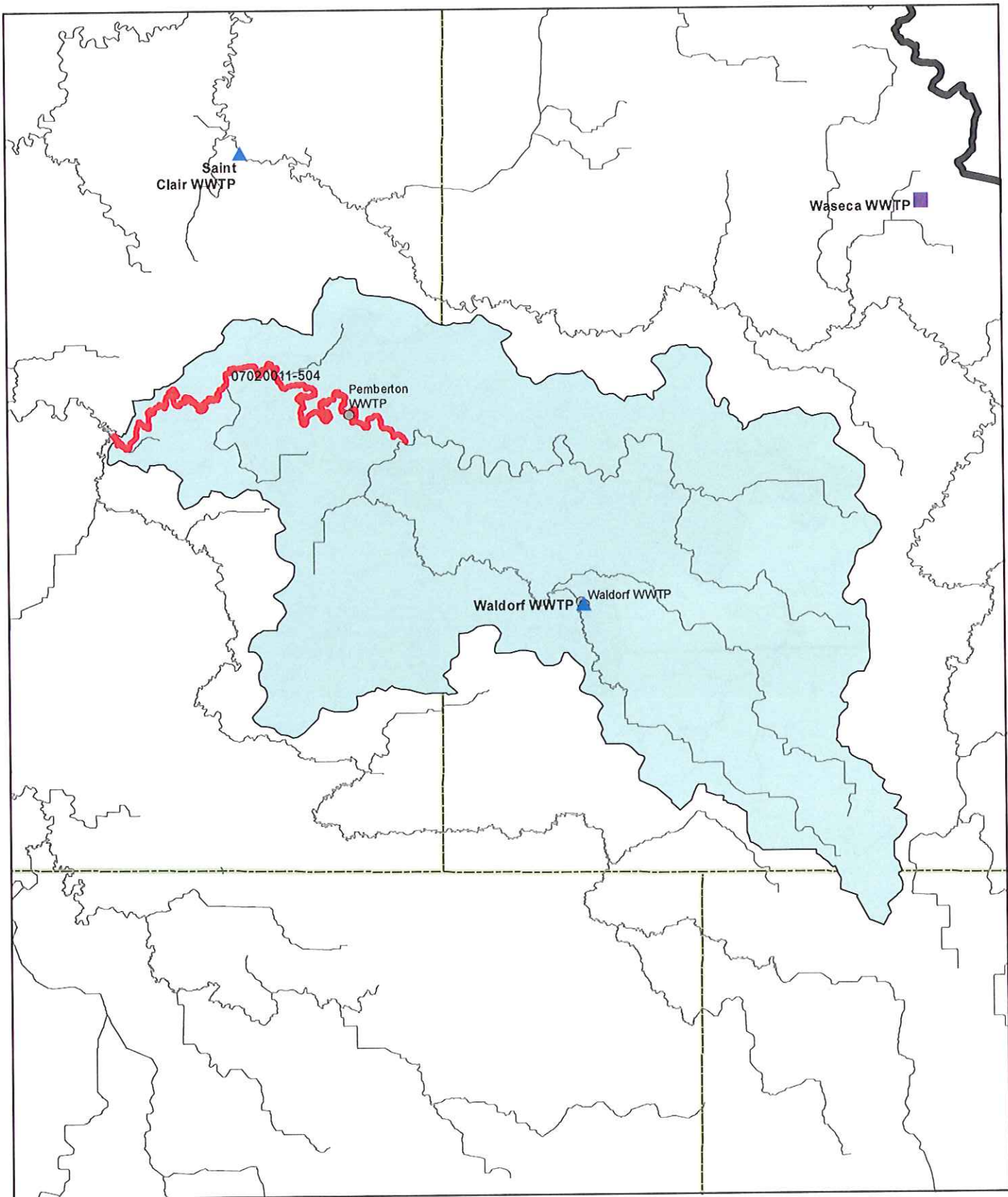
Facilities Below WLA

- ▲ Below WLA: 0-1 kg/d
- Below WLA: 1-2 kg/d
- ◆ Below WLA: >2 kg/d
- NPDES discharge station

- RES Impairment
- ~ Assessed stream

Area upstream of AUID

Drainage area for AUID T07020011_501



Facilities Above WLA

- ▲ Above WLA: 0-1 kg/d
- Above WLA: 1-5 kg/d
- ◆ Above WLA: >5 kg/d

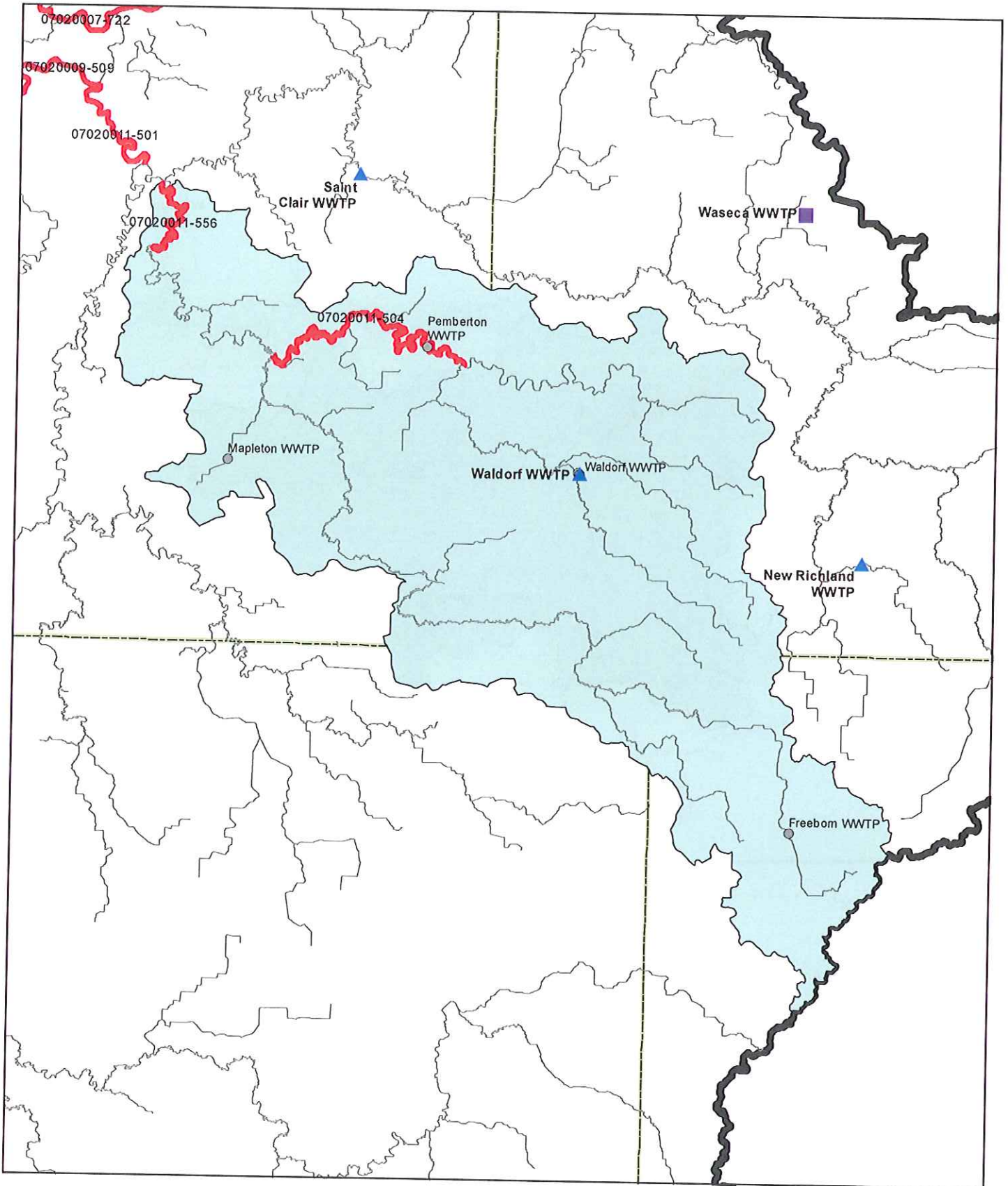
Facilities Below WLA

- ▲ Below WLA: 0-1 kg/d
- Below WLA: 1-2 kg/d
- ◆ Below WLA: >2 kg/d
- NPDES discharge station

RES Impairment

Assessed stream

Area upstream of AUID



Facilities Above WLA

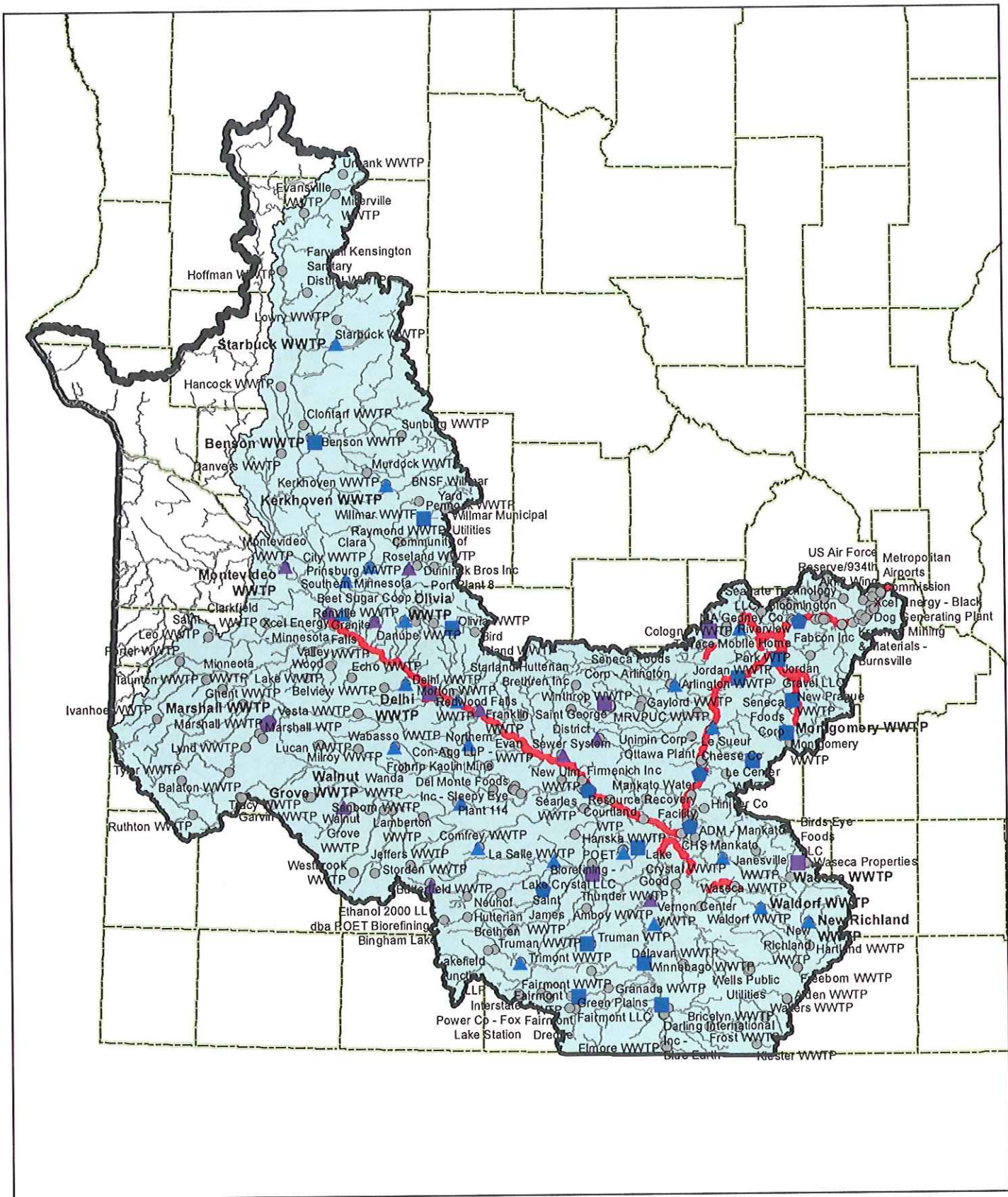
- ▲ Above WLA: 0-1 kg/d
- Above WLA: 1-5 kg/d
- ◆ Above WLA: >5 kg/d

Facilities Below WLA

- ▲ Below WLA: 0-1 kg/d
- Below WLA: 1-2 kg/d
- ◆ Below WLA: >2 kg/d
- NPDES discharge station

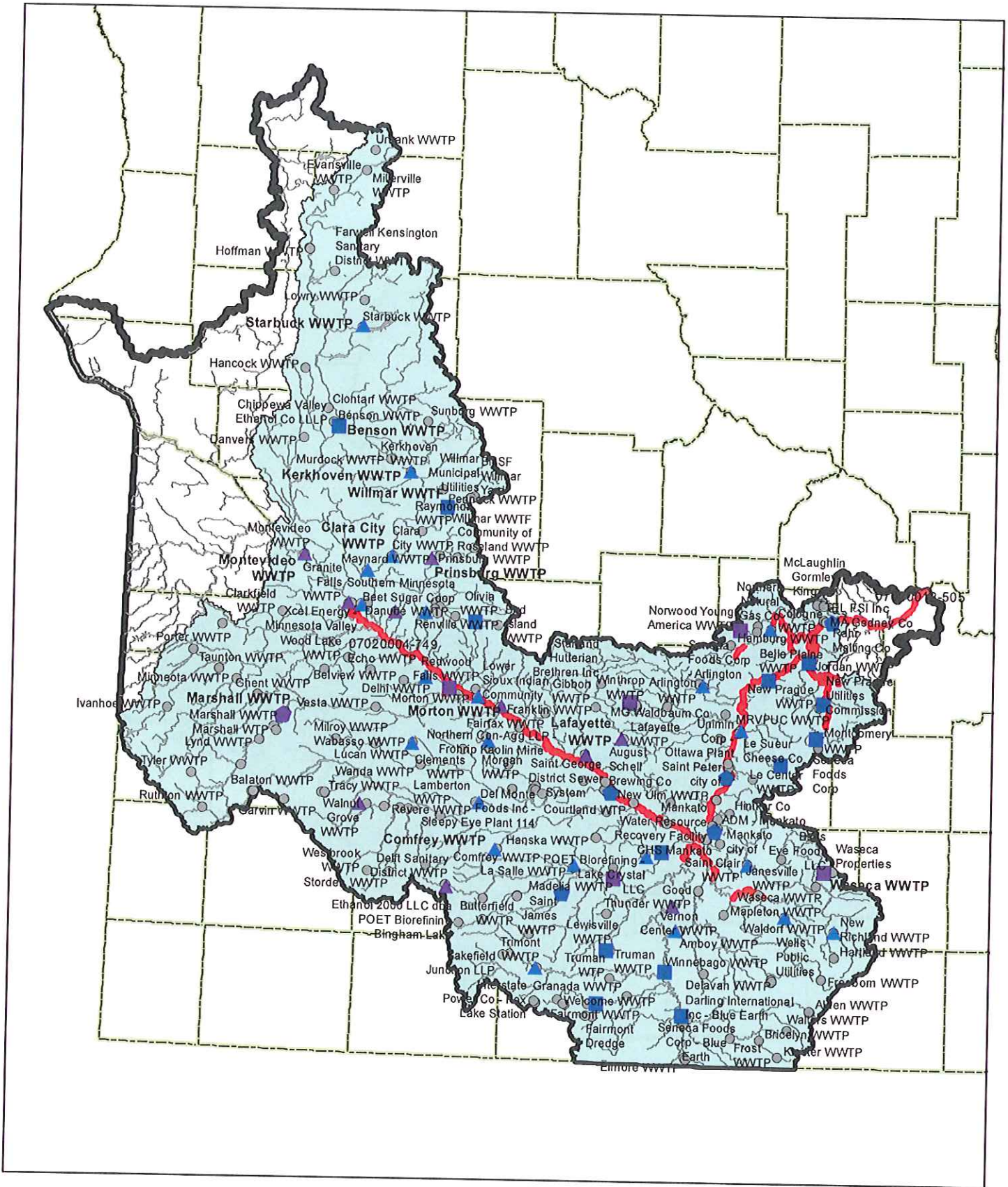
- ~ RES Impairment
- ~ Assessed stream

☁ Area upstream of AUID



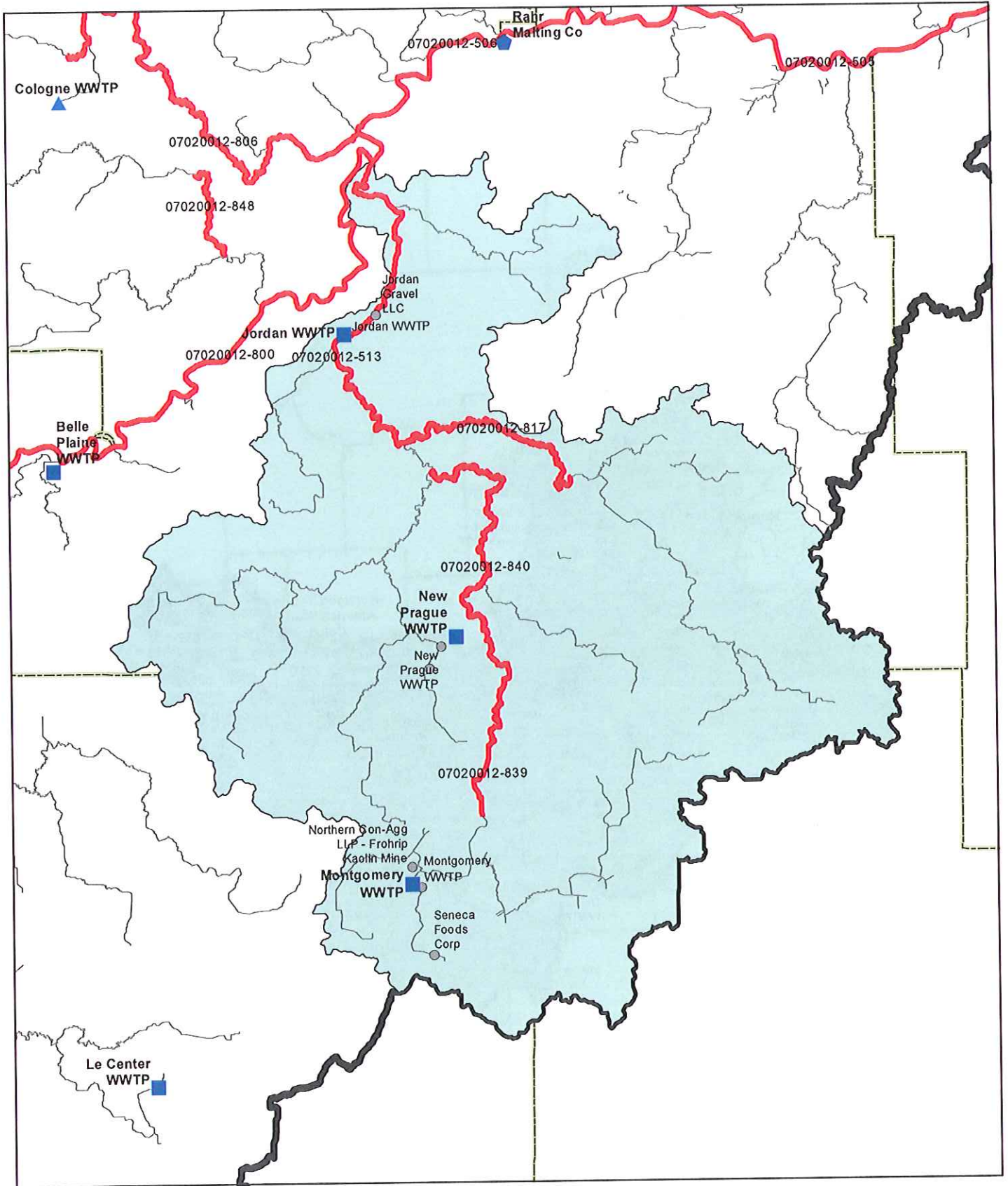
- | | |
|-----------------------------|-----------------------------|
| Facilities Above WLA | Facilities Below WLA |
| ▲ Above WLA: 0-1 kg/d | ▲ Below WLA: 0-1 kg/d |
| ■ Above WLA: 1-5 kg/d | ■ Below WLA: 1-2 kg/d |
| ◆ Above WLA: >5 kg/d | ◆ Below WLA: >2 kg/d |
| ○ NPDES discharge station | |

- | | |
|-----------------|-----------------------|
| RES Impairment | Area upstream of AUID |
| Assessed stream | |



- | Facilities Above WLA | Facilities Below WLA |
|---------------------------|-----------------------|
| ▲ Above WLA: 0-1 kg/d | ▲ Below WLA: 0-1 kg/d |
| ■ Above WLA: 1-5 kg/d | ■ Below WLA: 1-2 kg/d |
| ◆ Above WLA: >5 kg/d | ◆ Below WLA: >2 kg/d |
| ○ NPDES discharge station | |

- RES Impairment
- Area upstream of AUID
- ~ Assessed stream



Facilities Above WLA

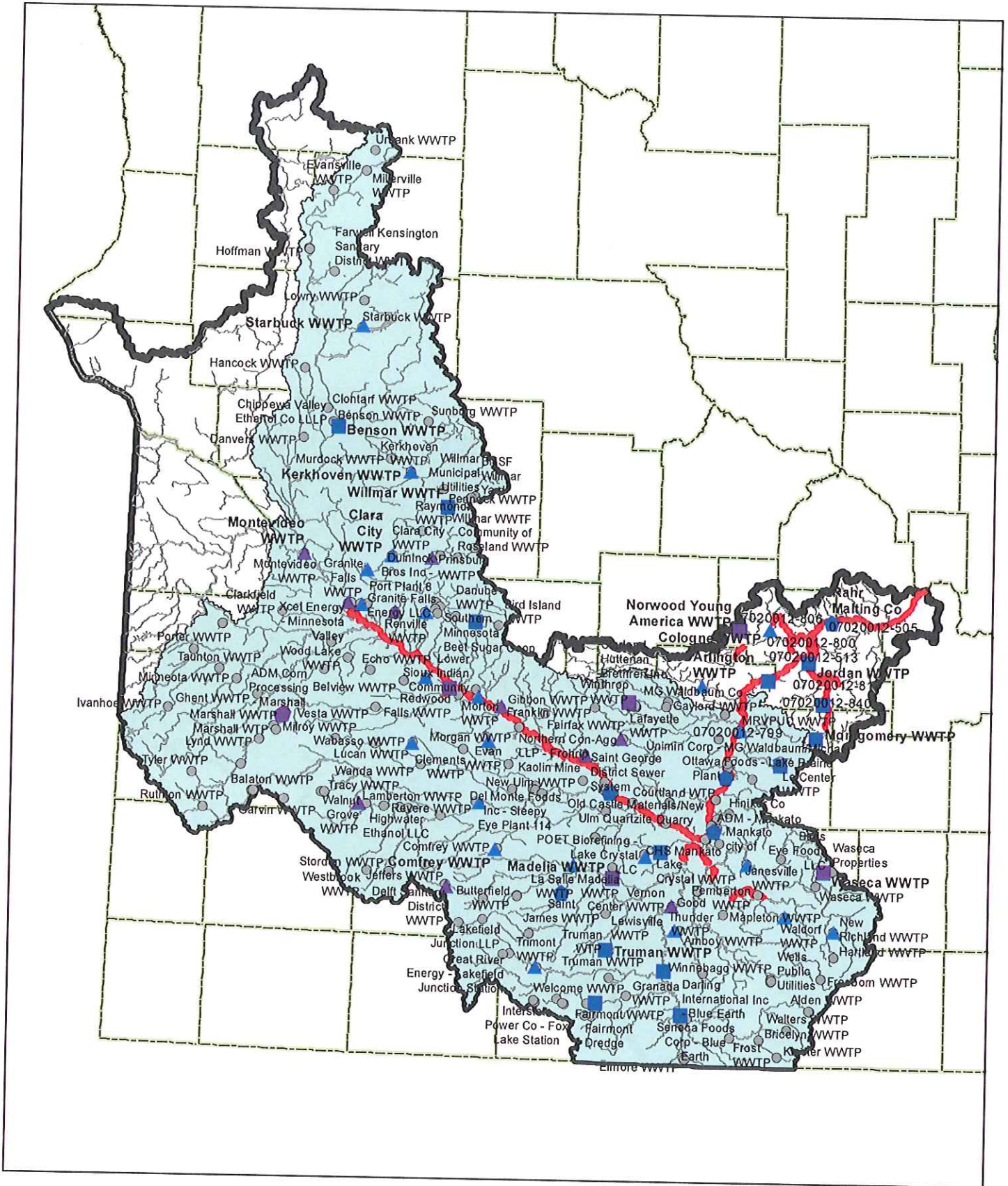
- ▲ Above WLA: 0-1 kg/d
- Above WLA: 1-5 kg/d
- ◆ Above WLA: >5 kg/d

Facilities Below WLA

- ▲ Below WLA: 0-1 kg/d
- Below WLA: 1-2 kg/d
- ◆ Below WLA: >2 kg/d
- NPDES discharge station

- RES Impairment
- Area upstream of AUID
- Assessed stream

Area upstream of AUID



Facilities Above WLA

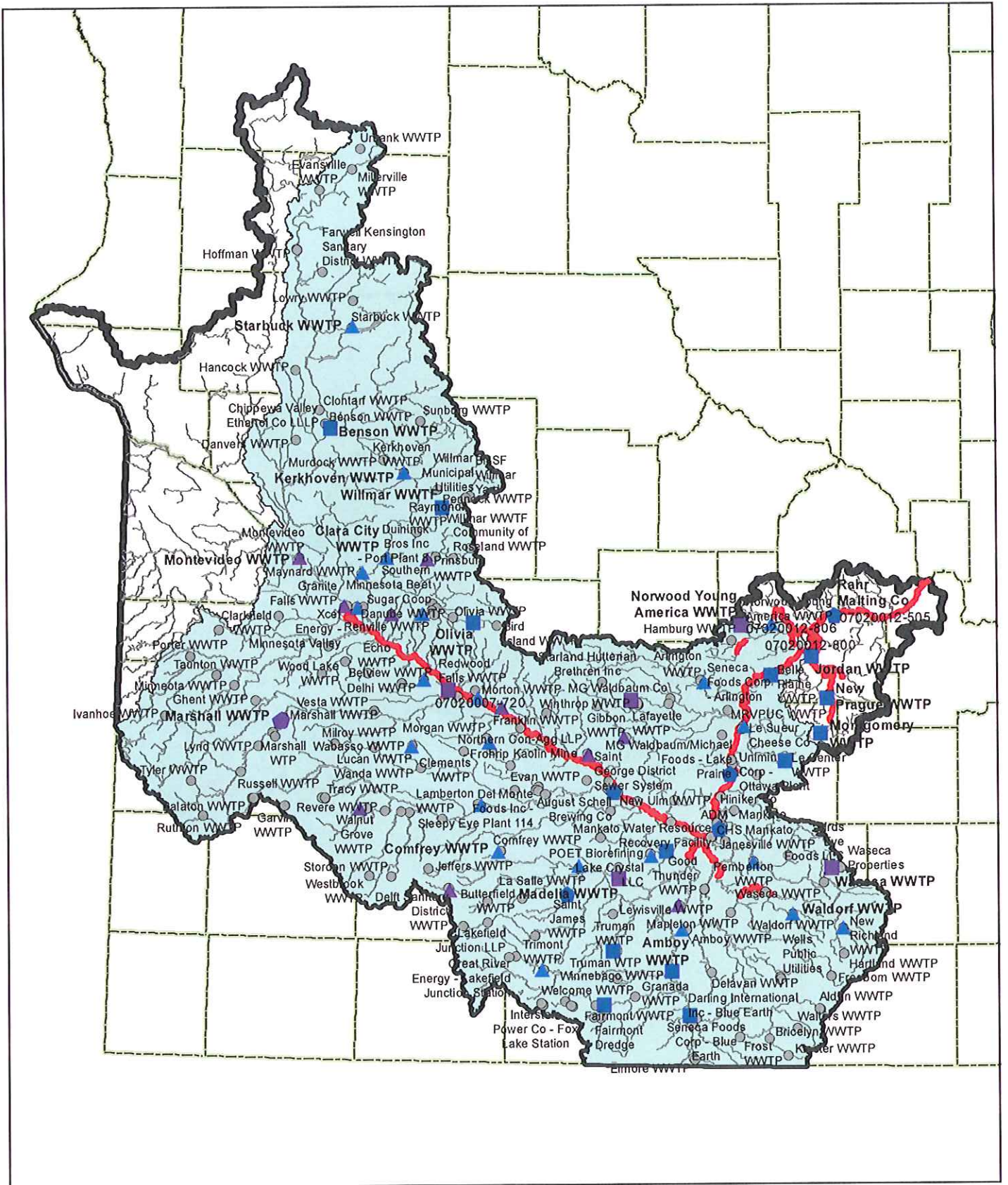
- ▲ Above WLA: 0-1 kg/d
- Above WLA: 1-5 kg/d
- ◆ Above WLA: >5 kg/d

Facilities Below WLA

- ▲ Below WLA: 0-1 kg/d
- Below WLA: 1-2 kg/d
- ◆ Below WLA: >2 kg/d
- NPDES discharge station

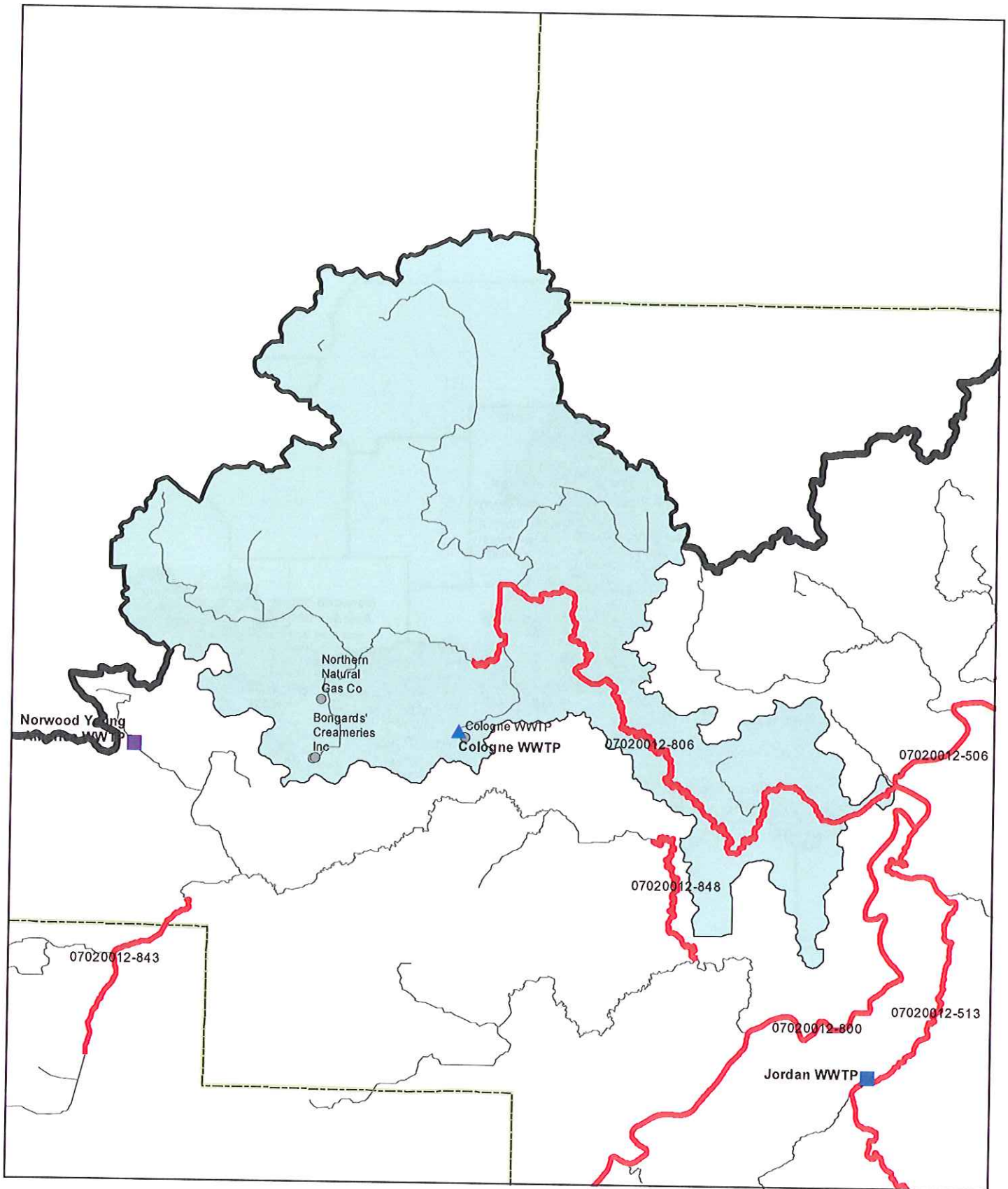
- RES Impairment
- Assessed stream

Area upstream of AUID



- | Facilities Above WLA | Facilities Below WLA |
|---------------------------|-----------------------|
| ▲ Above WLA: 0-1 kg/d | ▲ Below WLA: 0-1 kg/d |
| ■ Above WLA: 1-5 kg/d | ■ Below WLA: 1-2 kg/d |
| ◆ Above WLA: >5 kg/d | ◆ Below WLA: >2 kg/d |
| ○ NPDES discharge station | |

- | | |
|-----------------|-----------------------|
| RES Impairment | Area upstream of AUID |
| Assessed stream | |



Facilities Above WLA

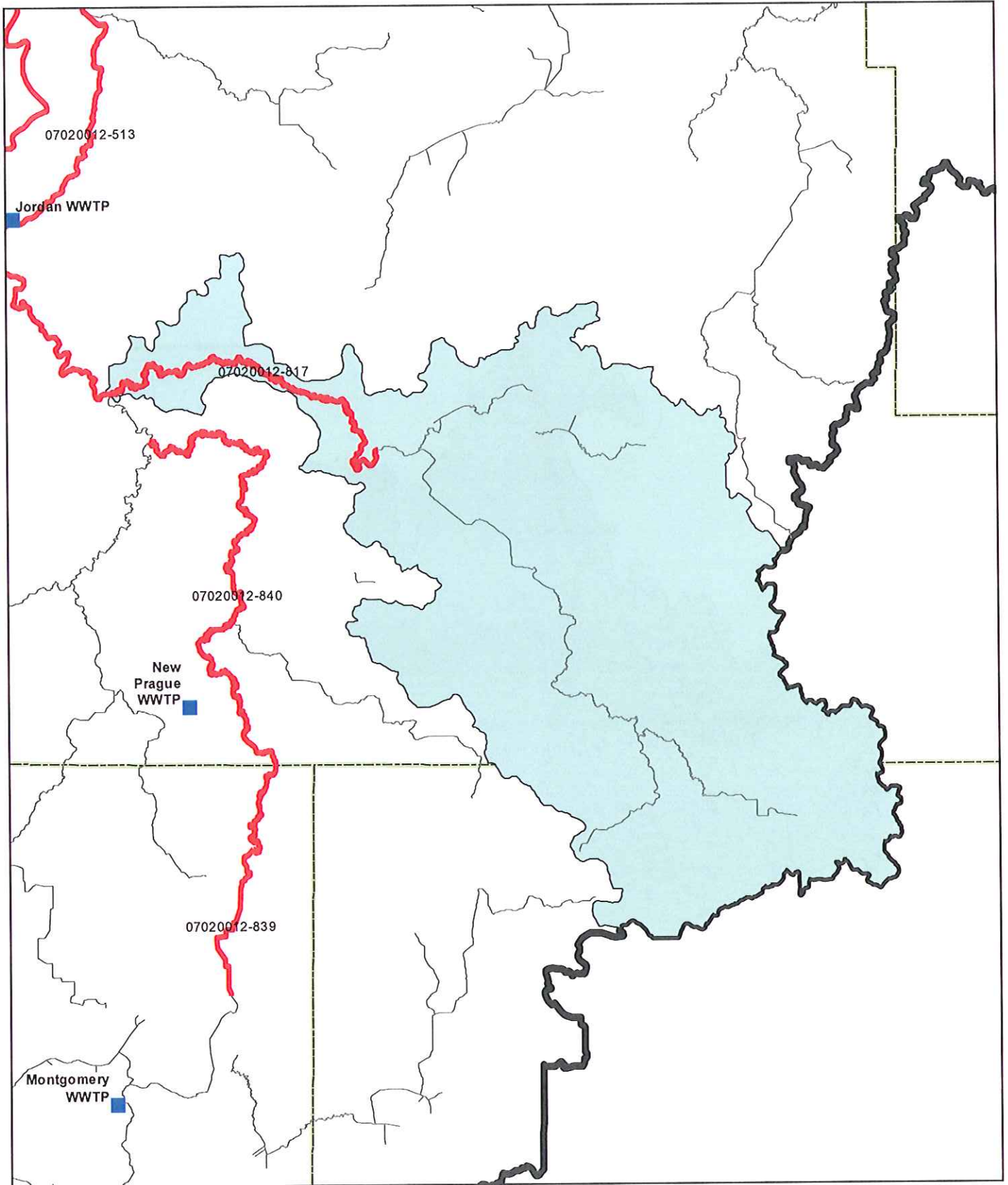
- ▲ Above WLA: 0-1 kg/d
- Above WLA: 1-5 kg/d
- ◆ Above WLA: >5 kg/d

Facilities Below WLA

- ▲ Below WLA: 0-1 kg/d
- Below WLA: 1-2 kg/d
- ◆ Below WLA: >2 kg/d
- NPDES discharge station

- RES Impairment
- Area upstream of AUID
- Assessed stream

Drainage area for AUID T07020012_806



Facilities Above WLA

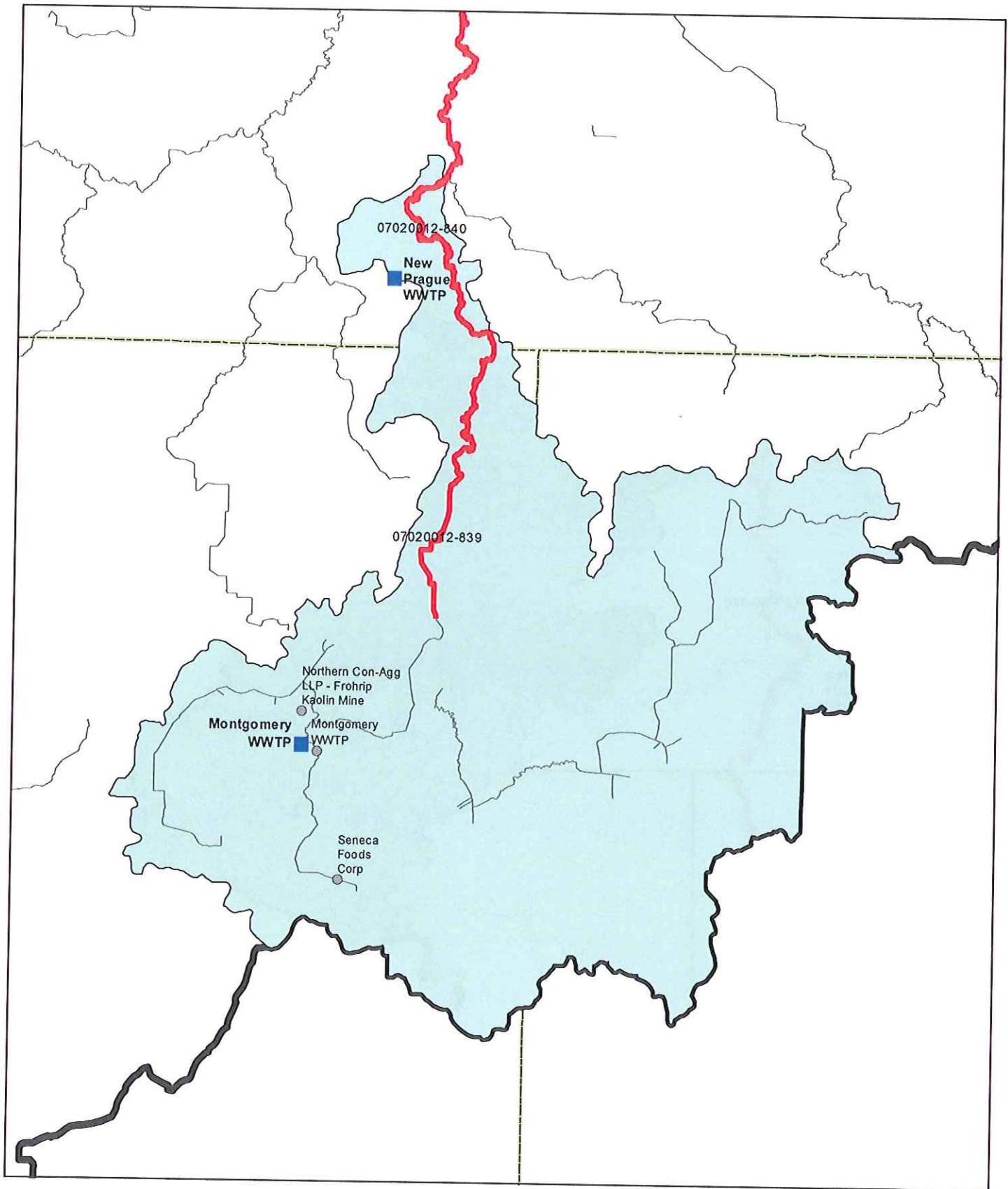
- ▲ Above WLA: 0-1 kg/d
- Above WLA: 1-5 kg/d
- ◆ Above WLA: >5 kg/d

Facilities Below WLA

- ▲ Below WLA: 0-1 kg/d
- Below WLA: 1-2 kg/d
- ◆ Below WLA: >2 kg/d
- NPDES discharge station

- RES Impairment
- Assessed stream

- Area upstream of AUID



Facilities Above WLA

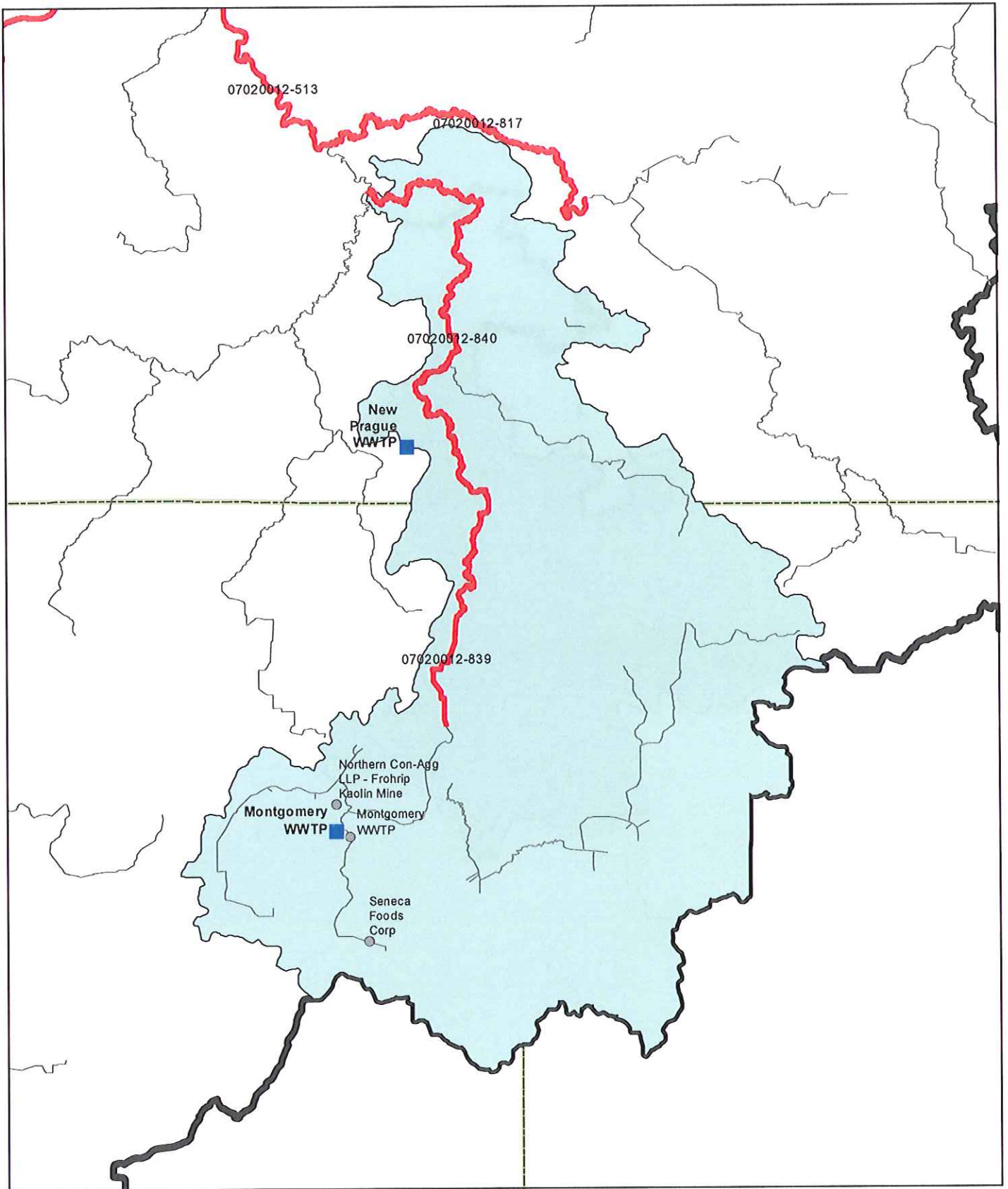
- ▲ Above WLA: 0-1 kg/d
- Above WLA: 1-5 kg/d
- ◆ Above WLA: >5 kg/d

Facilities Below WLA

- ▲ Below WLA: 0-1 kg/d
- Below WLA: 1-2 kg/d
- ◆ Below WLA: >2 kg/d
- NPDES discharge station

- RES Impairment
- Area upstream of AUID
- Assessed stream

Area upstream of AUID



Facilities Above WLA

- ▲ Above WLA: 0-1 kg/d
- Above WLA: 1-5 kg/d
- ◆ Above WLA: >5 kg/d

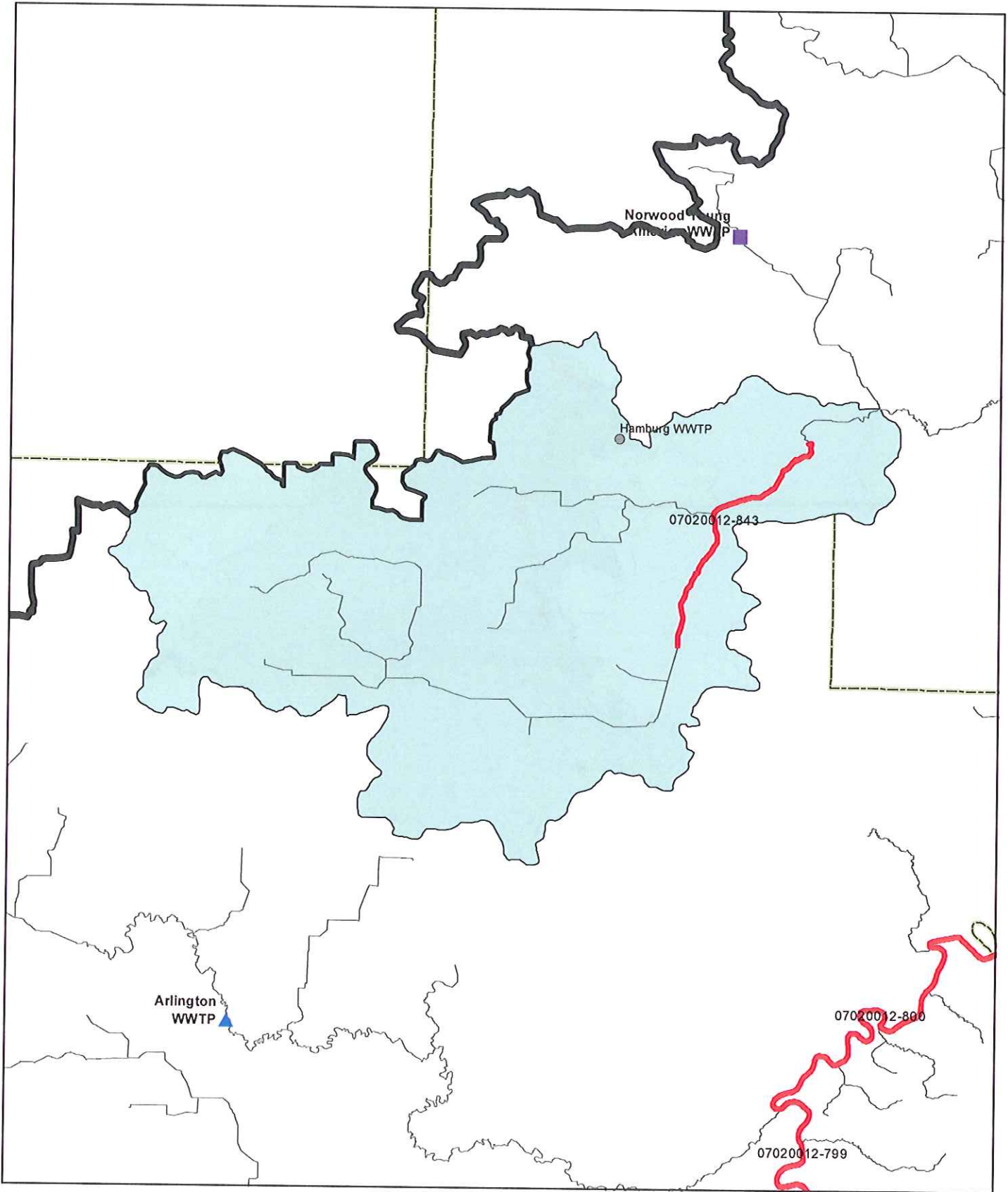
Facilities Below WLA

- ▲ Below WLA: 0-1 kg/d
- Below WLA: 1-2 kg/d
- ◆ Below WLA: >2 kg/d
- NPDES discharge station

RES Impairment

Area upstream of AUID

Assessed stream



Facilities Above WLA

- ▲ Above WLA: 0-1 kg/d
- Above WLA: 1-5 kg/d
- ◆ Above WLA: >5 kg/d

Facilities Below WLA

- ▲ Below WLA: 0-1 kg/d
- Below WLA: 1-2 kg/d
- ◆ Below WLA: >2 kg/d

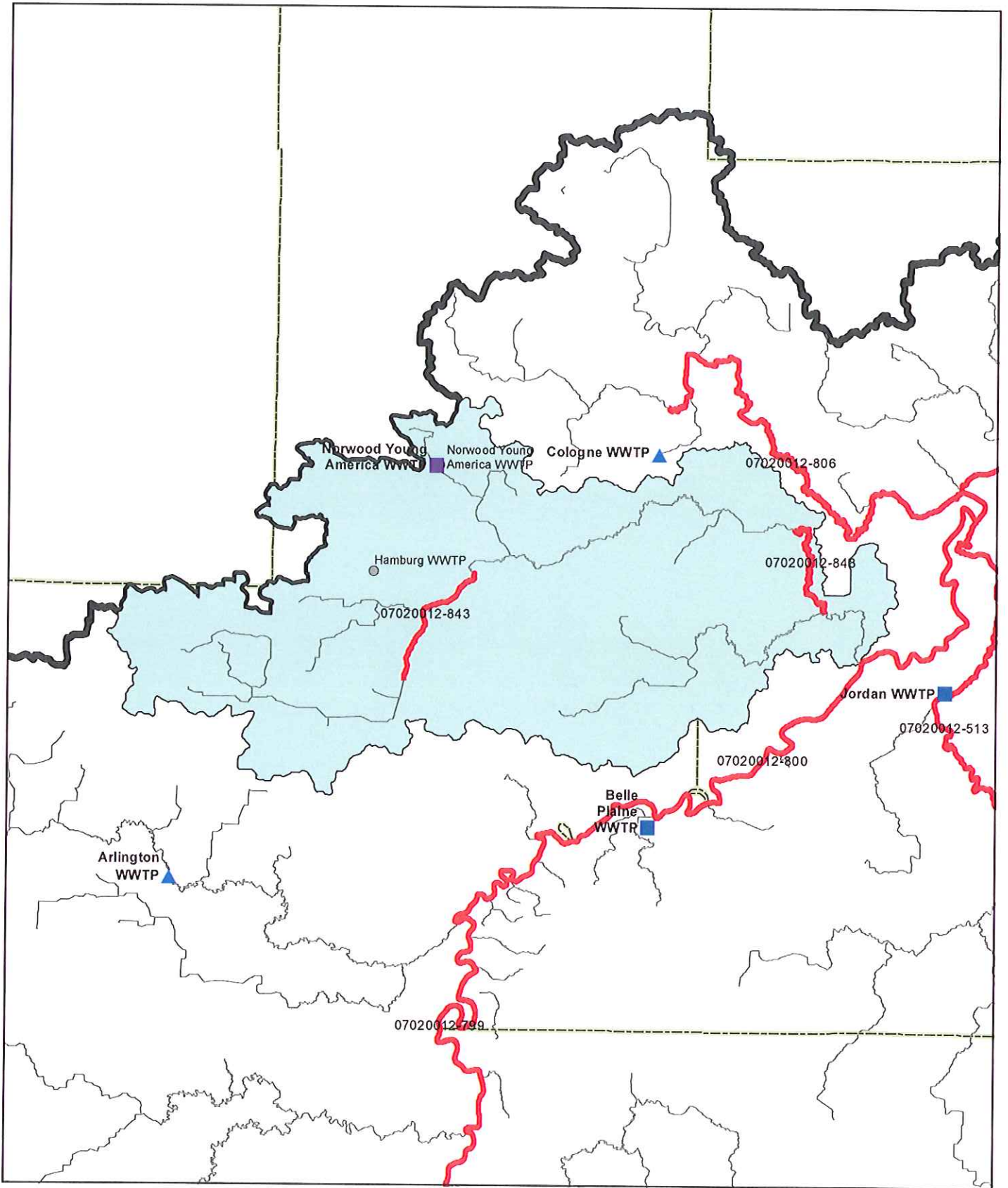
○ NPDES discharge station

— RES Impairment

~ Assessed stream

⬭ Area upstream of AUID

Drainage area for AUID T07020012_843



Facilities Above WLA

- ▲ Above WLA: 0-1 kg/d
- Above WLA: 1-5 kg/d
- ◆ Above WLA: >5 kg/d

Facilities Below WLA

- ▲ Below WLA: 0-1 kg/d
- Below WLA: 1-2 kg/d
- ◆ Below WLA: >2 kg/d
- NPDES discharge station

- RES Impairment
- Assessed stream

Area upstream of AUID

